

# FACTORY AUTOMATION EQUIPMENT'S



Hermes C / 300  
Two-Color Printing  
G&E Computer Solutions

**cab**  
Computerized Automation

- 9-inch
- 300 dpi
- 125 mm/h
- Ribbon cover

**Tanphat Automation JSC (TPA)**, a subsidiary of Tanphat Equipment JSC, is a system integrator established in 2006 focused on design, manufacturing & supplying equipment and system for Industry and Training. Mainly our customers are Japanese and Korean Factories and Vocational Institutes. We have employees experienced in customer service, project management, industrial technology, electrical and mechanical design and assembly. Intelligent Solutions with cost optimization, stability of machines and local support services are our target always.

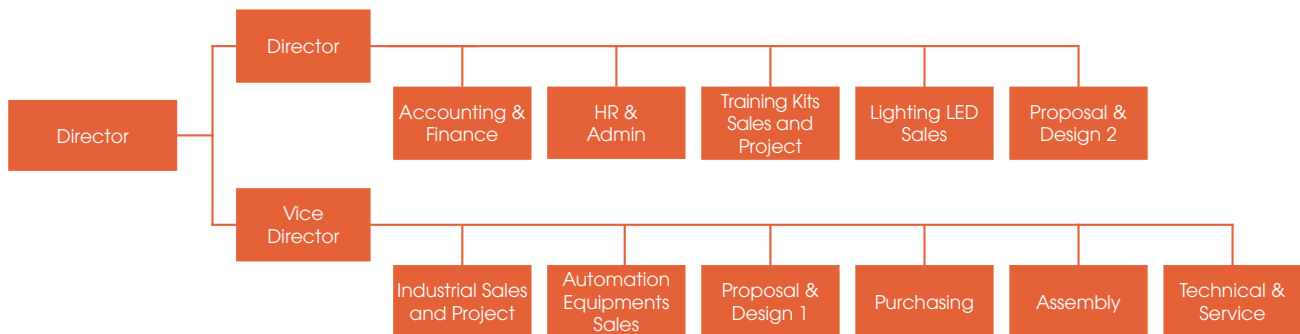
**Establishment Year:** 2006

**Factory Address:** No 168, Phan Trong Tue Road, Thanh Liet Ward, Thanh Tri Dist, Hanoi

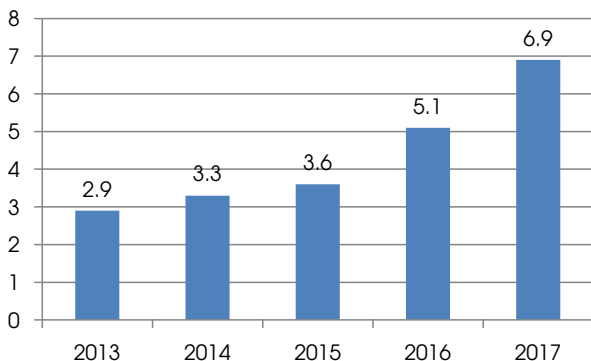
**Main Technology:** Vision, Robotics, PCB Design, Mechanical & Electrical Design.

**Certificate:** ISO 9001:2008 , CE 12601:2001

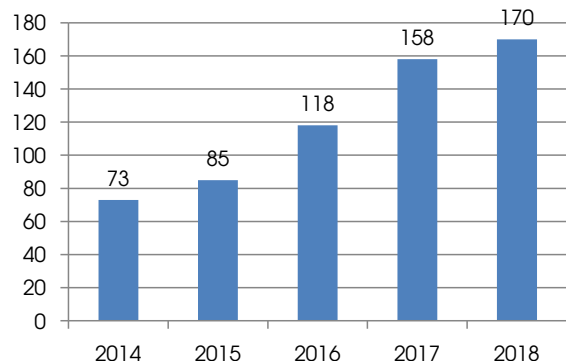
### Organization:



**Turnover**  
(USD Million)



**Number of Employees**



## 1. Office



## 2. Assembly Workshop



Assembly Workshop



Machine Assembly



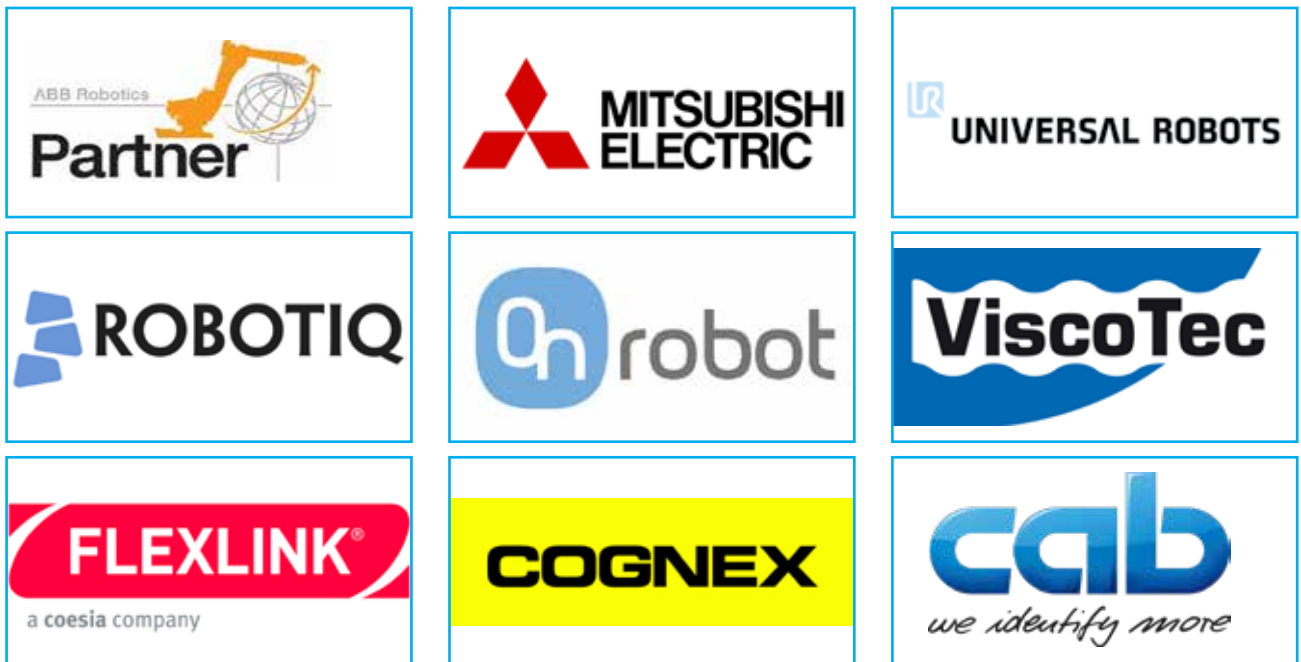
Machine Assembly



Part Assembly

No	Products	Application	
1	<p>Universal Robot</p> 	<ul style="list-style-type: none"> <li>• Automotive and subcontractors</li> <li>• Electronics and technology</li> <li>• Furniture and equipment</li> <li>• Food and agriculture</li> <li>• Metal and machining</li> <li>• Plastic and polymers</li> </ul>	
2	<p>Flexlink Conveyor</p> 	<ul style="list-style-type: none"> <li>• Pharmaceutical</li> <li>• Bearings</li> <li>• Consumer</li> <li>• Automotive</li> <li>• Food</li> <li>• PCB handling</li> </ul>	
3	<p>Cognex Vision, Barcode Reader</p> 	<ul style="list-style-type: none"> <li>• Automotive</li> <li>• Electronics</li> <li>• Consumer Products</li> <li>• Food and Beverage</li> <li>• Packaging</li> <li>• Pharmaceutical Distributors</li> </ul>	
4	<p>Viscotec Dispenser</p> 	<ul style="list-style-type: none"> <li>• Adhesives and Chemicals</li> <li>• Food &amp; Pharma</li> <li>• Components &amp; Devices / Preeflow®</li> </ul>	
5	<p>CAB Printer</p> 	<ul style="list-style-type: none"> <li>• Auto</li> <li>• Consumer</li> <li>• Chemistry</li> <li>• Pharma</li> </ul>	
6	<p>AGV</p> 	<ul style="list-style-type: none"> <li>• Raw material transfer</li> <li>• Station on the car</li> <li>• Conveyor Finished Goods</li> </ul>	
7	<p>Factory Automation Solution</p> 	<ul style="list-style-type: none"> <li>• Parts Feeding</li> <li>• Sorting</li> <li>• Assembly</li> <li>• Measuring</li> <li>• Soldering</li> </ul>	<ul style="list-style-type: none"> <li>• Pick and Place</li> <li>• Packing &amp; Palletizing</li> <li>• Robot Integrated</li> <li>• Vision</li> </ul>
8	<p>Robotics Applications</p> 	<ul style="list-style-type: none"> <li>• Machine Tending</li> <li>• Sand/Ball Blasting</li> <li>• Assembly</li> <li>• Dispensing</li> <li>• Pick and Place</li> </ul>	<ul style="list-style-type: none"> <li>• Packing &amp; Palletizing</li> <li>• Grinding &amp; Polishing</li> <li>• Loading / Unloading</li> <li>• Collaborative Robots</li> </ul>

## PARTNERS



## CUSTOMERS



Our three different collaborative robots are easily integrated into existing production environments. With six articulation points, and a wide scope of flexibility, the collaborative robot arms are designed to mimic the range of motion of a human arm. Select the size of the collaborative robot arm that best meets your needs below.

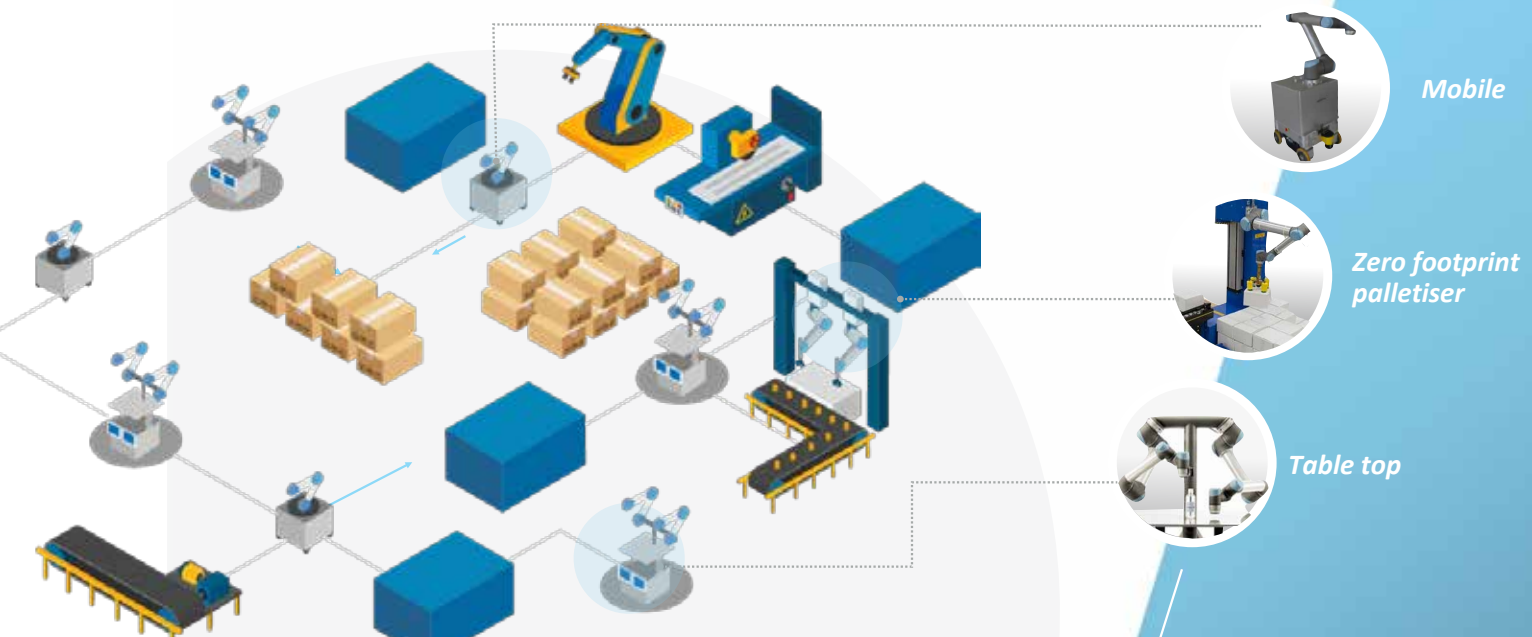
Patented technology lets operators with no programming experience quickly set up and operate our cobots with intuitive, 3D visualization. Simply move the robot arm to desired waypoints or touch the arrow keys on the easy-to-use touchscreen tablet.

**PICK THE RIGHT COBOT FOR YOUR AUTOMATION**

Automate tasks up to:	3kg	5kg	10kg
Working radius:	500mm <i>(Best deployed in tight spaces or on table tops)</i>	850mm	1300mm <i>(For tasks across large areas)</i>

## WORKS WITH SPACE CONSTRAINTS

*Integrates well with existing machines and easy to move around the factory floor*



## APPLICATIONS



**Automotive and subcontractors:** Car manufacturing in the automotive industry done by robots.



**Electronics and technology:** Electronics and Technology industries can be integrated with collaborative robot arm.



**Furniture and equipment:** High quality for furniture and equipment industries with robot arms



**Food and agriculture:** Food and agriculture industries improved by robot arms.



**Metal and machining:** Boost your productivity in your metal and machining industry with industrial robot arms.



**Plastic and polymers:** Industrial robot arms can be used on plastic and polymer production.



**Pharma and chemistry:** Our robotic arms embrace the healthcare, pharma and chemistry industries.



**Plastic and polymers:** Collaborative robot arms help to develop and innovate the scientific and research communities.



2-Finger Gripper Kit for Universal Robots



3-Finger Gripper Kit for Universal Robots



RG6 Gripper



WEISS ROBOTICS Griplit E Series



ZIMMER Group Easy-to-use gripping system HRC-EP01



SCHUNK Gripping System for Universal Robots



Millibar manual tool changer



BN Uni-kit



Secure IoT Communication Solution (ARCS)



Paint and Disposable Robot Covers



Roboworld Protective Suits for UR3, UR5 and UR10



Pendant Armor(TM) teach pendant bumper





OptoForce's Force Torque Sensor Kit



Robotiq Force Torque Sensor Kit for Universal Robots



ATI Axia80 Force Torque Sensor



Force/Torque Sensor KMS 40



Robotiq Camera Kit for Universal Robots



AccuPick 3D



Microscan Guidance



VISOR® Robotic for Easy to Use Vision Guided Robotics



Pick-it 3D Robot Vision System



Joystick application for Universal Robots



YouRing



Vention 3D MachineBuilder™

**FlexLink** is a world-class factory automation expert. Working closely with global customers, we provide innovative, automated solutions to produce goods smarter, safer and at lower operating costs. For more than 35 years, our solutions have enabled manufacturers, machine providers and system integrators to take control of production efficiency.

We are a leading provider of high-end solutions to manufacturing industries such as: food, beverages, personal care, healthcare, automotive and electronics.



Belt conveyor stainless steel



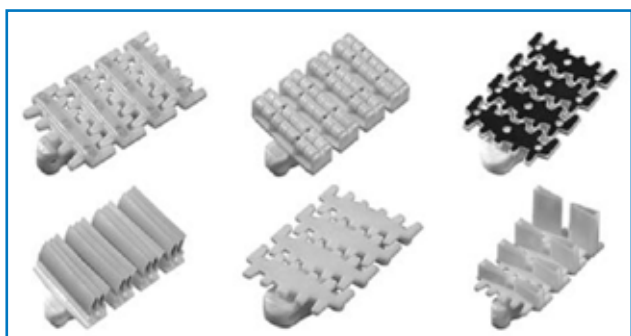
Belt conveyor aluminum



Chain conveyor stainless steel



Chain conveyor aluminum



Plastic chains



Puck conveyor



Montrac monorail



Pallet conveyor

## APPLICATIONS



**Pharmaceutical:** Conveyor functions for puck handling are well suited for handling small, fragile products.



**Bearings:** Transportation of rings, rollers and complete bearings directly on chain or on pallet



**Consumer:** A wedge conveyor uses two conveyor tracks facing each other to provide fast and gentle transport, horizontally and vertically



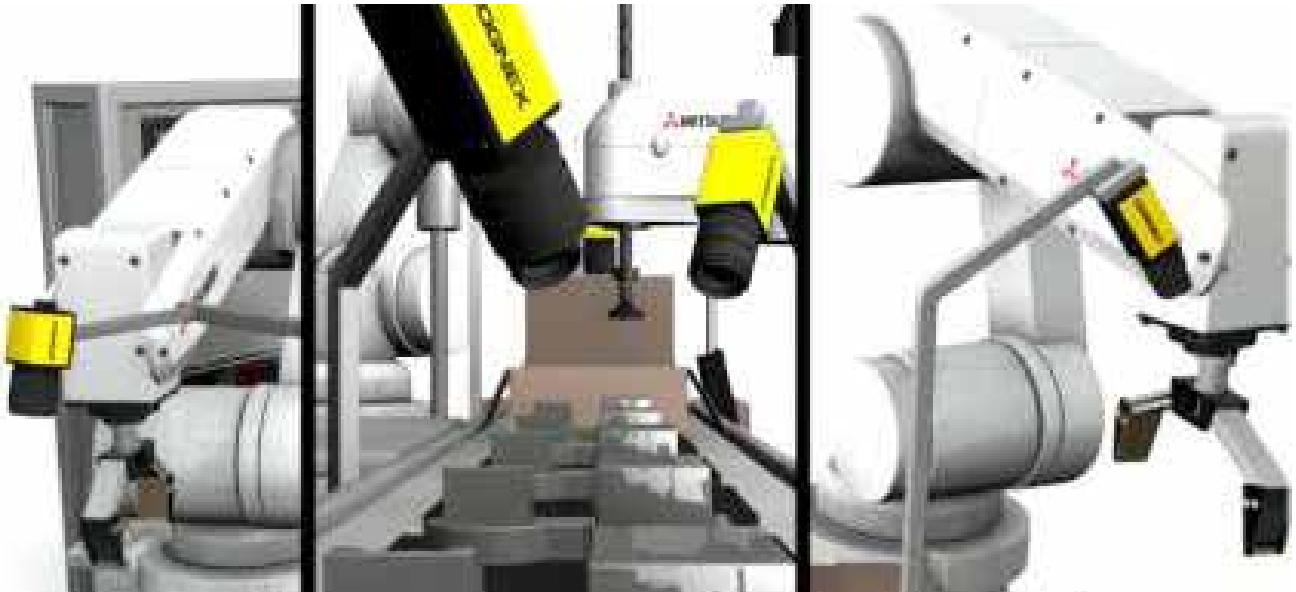
**Automotive:** Efficient line layouts are easily designed and built thanks to the modular concept and standardized functions.



**Food:** Solution to combine flows from two cheese packaging machines with minimal risk of squashing or blocking products.



**PCB handling:** GENIUS is extremely flexible and can be used in any PCB production line thanks to the standardized design.



**Cognex Corporation** is the world's leading provider of vision systems, vision software, vision sensors and industrial ID readers used in manufacturing automation.

**Cognex** vision helps companies improve product quality, eliminate production errors, lower manufacturing costs, and exceed consumer expectations for high quality products at an affordable price. Typical applications for machine vision include detecting defects, monitoring production lines, guiding assembly robots, and tracking, sorting and identifying parts.



Vision Sensors



Fixed - mount Barcode Readers



Vdision systems



Handheld Barcode Readers



3D laser profilers



Mobile Solutions

## APPLICATIONS



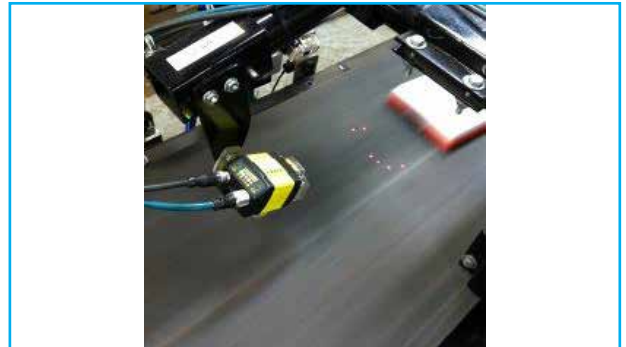
**Automotive:** *In-Sight vision systems critical to successful handling and character reading of turned parts*



**Pharmaceutical Distributors:** *Track and trace of pharmaceutical folding boxes with Cognex vision systems: certain to be original*



**Electronics:** *VisionPro supports error free control system production at B&R*



**Logistics:** *Image Based ID Readers Improve Efficiency in Vitamin Retailer Warehouse*



**Packaging:** *Checker - reliable part detection even on high speed production lines*



**Consumer Products:** *Automated system for quality inspection*



**Food and Beverage:** *Vision Sensor Helps Automate High-Speed Loading of Transparent Cartons*



**Medical Devices:** *Vision system eliminates count deviations, inspects vials*

Established in 1997 and located in Germany, **ViscoTec** is a premium manufacturer of dosing applications and systems. We take pride in producing products that can dispense liquids of low to very high viscosity (and even sensitive and particle loaded liquids) at accurate or ultra-precise dosing quantities in the most challenging, complicated environments or circumstances.

**ViscoTec** products are suitable for the Adhesives & Chemicals, Food & Pharmaceutical, and Components & Devices industries. Our endless-piston principle makes ViscoTec the perfect choice for your products!

Examples of media that can be filled by our dosing applications are: adhesives, sealing agents, paints, soldering pastes, silicones, sauces, oils, jams, yoghurt, peanut paste, ice-cream, creams, ointments, lipstick, mascara and fruit juices etc.



Dosing Pumps/Dispensers



Filling Systems



2-Component Dosing Systems



Drive Units



Preparation Systems



Container and Barrel Emptying Systems



Dosing Controls



Micro-dosing/ dispensing

## APPLICATIONS



**Adhesives and Chemicals:** *ViscoTec has steadily made a name for itself in the handling of media that are notoriously difficult to dose, such as high-viscosity adhesives and sealants, solid-content pastes etc...*



**Food & Pharma:** *Filling and dosing in the food, cosmetics and pharmaceutical industries*



### Components & Devices / Preeflow®

*They belong to the smallest systems on the market that work according to the ViscoTec endless-piston principle. Volumetric dosing and exceptionally easy handling and maintenance are the unique features of these systems. With preeflow® products, dosing quantities from 0.001ml are really simple to achieve*

**Cab** has more than 40 years of professional experience, technological expertise and the ability to anticipate changing markets.

**Cab** experts know exactly what mechanisms are needed to shape business processes. Label printing, automated labeling, laser marking - cab offers proper solutions for all requirements regarding product and package marking.



Label printers



Print and apply



Marking laser



Soft ware



Label dispensers



Labels and ribbons



## APPLICATIONS



**Auto:** ZF TRW uses fiber lasers to encode gas generators of airbags.



**Consumer:** classification of goods



**Chemistry:** Black symbols amid red rhombs: two-color labels conformable to law provide the marking of potentially hazardous means of production



**Pharma:** Marking of pharmaceutical bins with a Hermes+ system

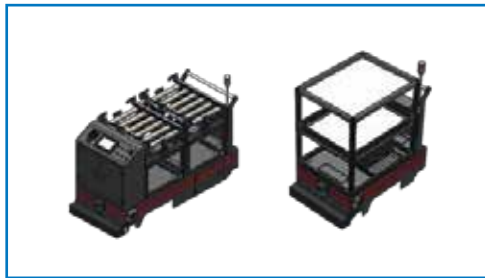


**Labeling on packaging in motion**



**Pallet labelling Application**

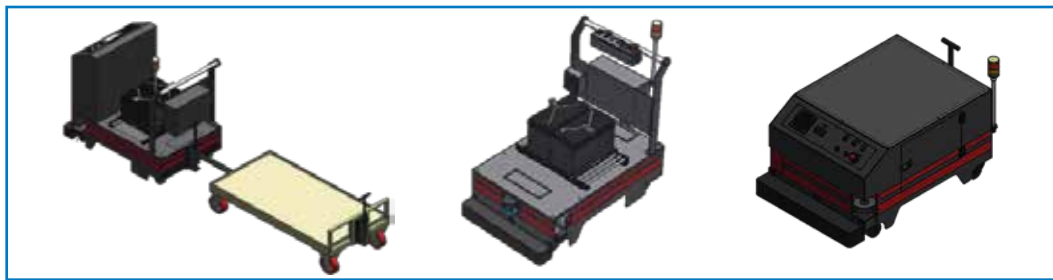
We also provide consultancy services for customers to improve the transportation system and raw materials for AGV car system with good quality at reasonable price. And to give our customers confidence in our products and services. We are pleased if the customer wants us to take the AGV to test at the factory. We also have a after-sales service team to ensure you receive the highest level of service.



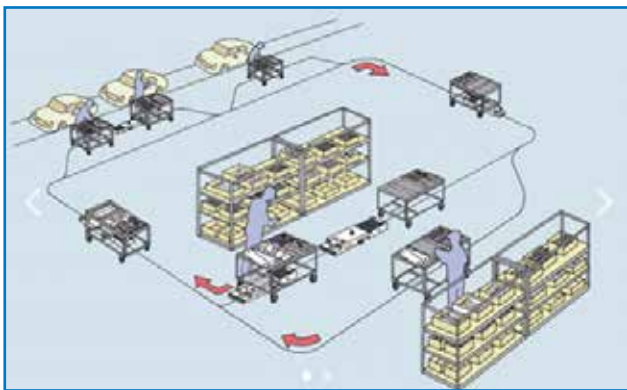
Truck



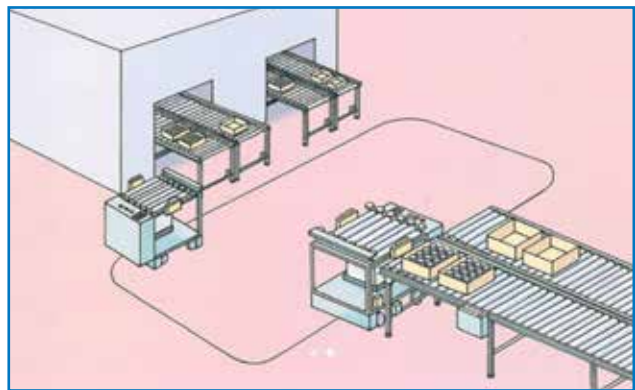
Dragging (underneath)



Tow



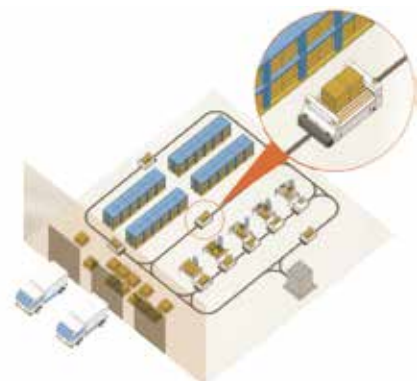
**Raw material transfer:** *Instead of transporting raw materials using human labor. Or replace the conveyor belt.*



**Station on the car:** *Bringing the AGV to work stations. It is an effective implementation model in the production line.*

### Conveyor Finished Goods

**In the delivery process, the finished goods would be needed.** *Safe transport for goods to prevent damage. AGV is the answer to the full potential of process control. And the highest time-saving delivery*



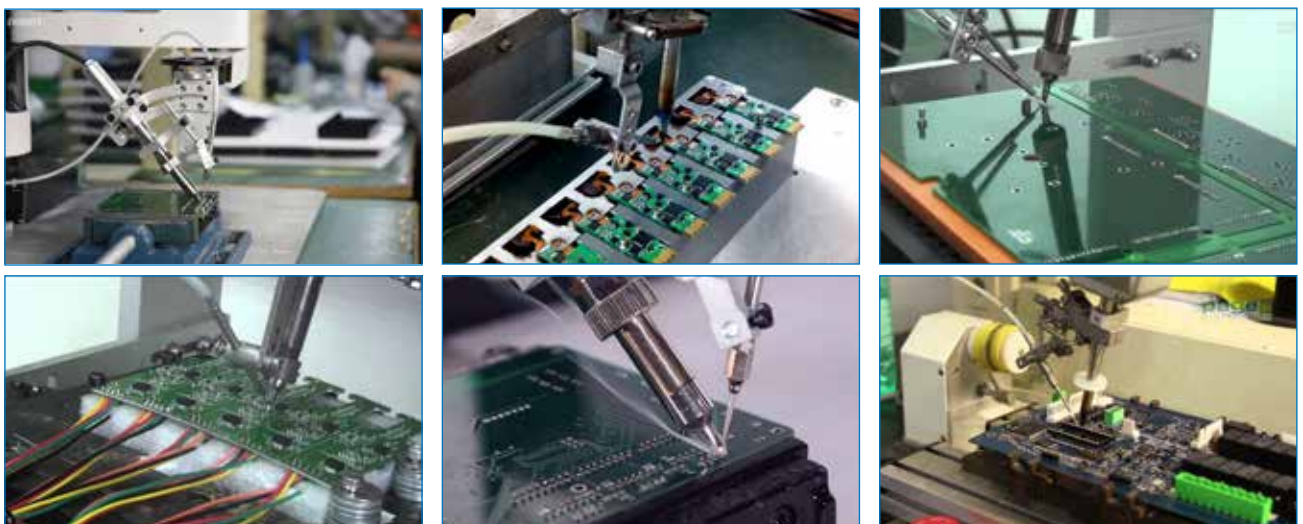
Our strict quality control, service, competitiveness and technology have elevated EVERPRECISION to the Global marketplace. With the full experiences in the motor motion control, mechanical designs, related software developing, Everprecision has our own ability to accomplish the ODM, OEM equipment. Only in a very short time, Everprecision becomes one of the most popularly supplier of soldering robot.



Model	EP200-SR	EP300-SR	EP300-SR
Moving area X/Y/Z/R	210/200/50 mm /±360°	330/300/100 mm /±360°	430/400/100 mm /±360°
Working area X/Y	175/200 mm	265/300 mm	365/400 mm
Max. speed	XY/Z: 400/250 mm/s R: 720°/sec	XY/Z: 600/320 mm/s R: 720°/sec	

### Teach Pendant

Easily input solder program with new operational software by Teach Pendant.

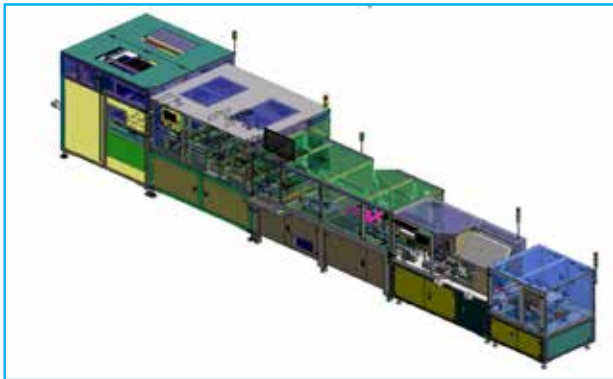




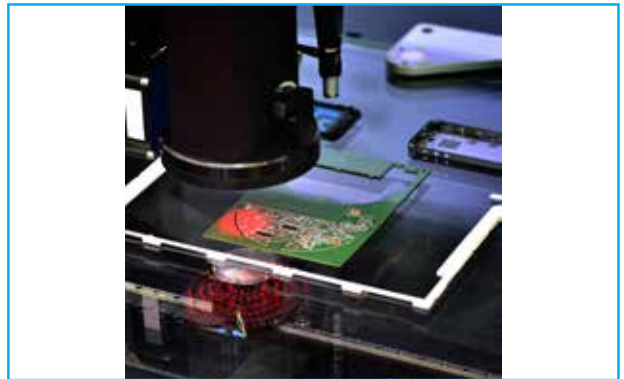
Parts Feeding Solutions



Sorting Solutions



Assembly Solutions



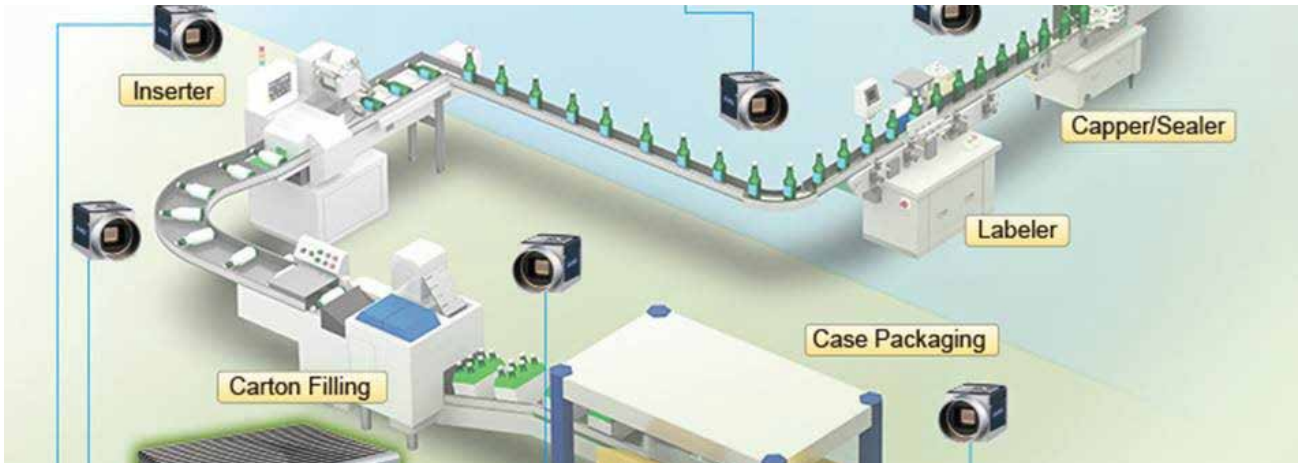
Measuring Solutions



Soldering Solutions



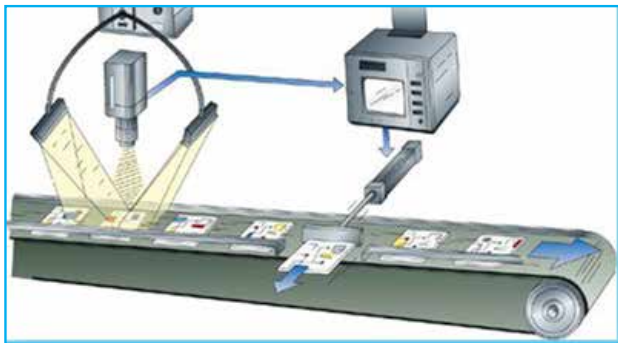
Painting Solution



**Inspection:** *Inspect for assembly errors, surface defects, damaged parts and missing features. Identify the orientation, shape and position of objects and features*



**Guide/Align:** *Guide automation equipment and robotic devices. Align parts for high accuracy assembly operations and other manufacturing processes.*



**Gauge/Measure:** *Gauge parts to check critical dimensions. Measure components for sorting and classification.*



**OCR/OCV:** *Read and verify alphanumeric characters marked directly on parts and printed on labels.*



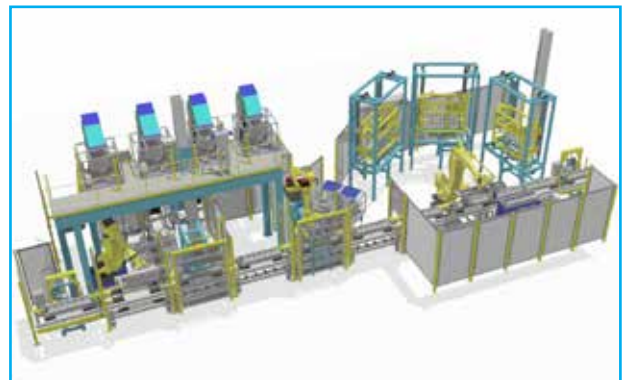
**Presence/Absence:** *Detect the presence or absence of simple features and objects to give basic pass/fail results.*



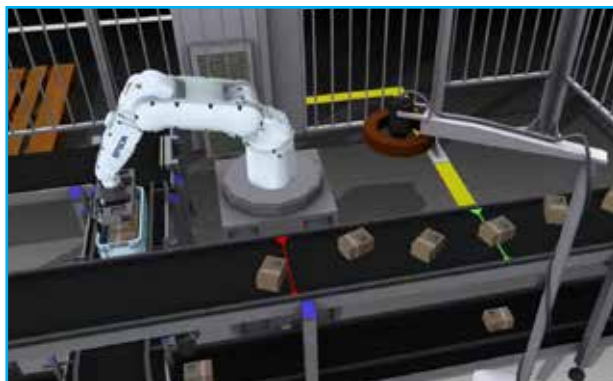
**Code Reading:** *Read 1-D barcodes and 2-D matrix codes as part of an overall inspection.*



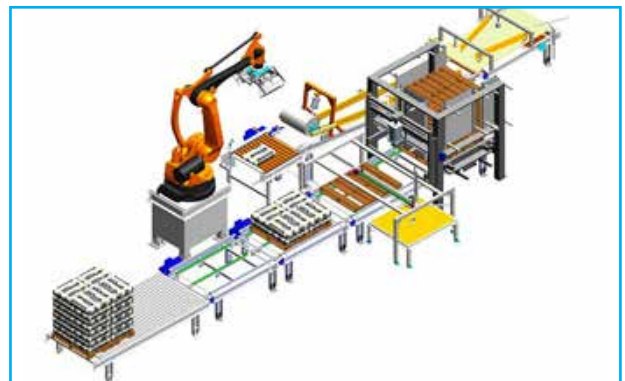
Machines Tending



Robotic Assembly line



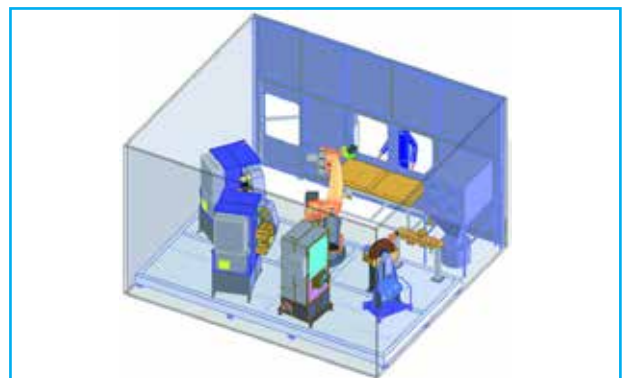
Robotics Pick and Place



Robotics Packing and Palletizing



Robotic Painting



Grinding & Polishing



Pressing Machine



Pressing Machine



Inspection Appearance



Outside Inspection Machines



Auto Pasting Line



Semi cutting machine



Forming machine



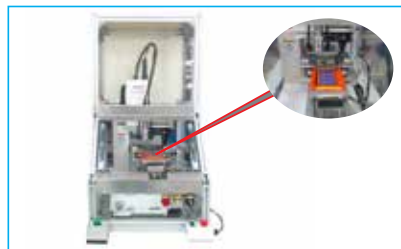
Assembly Lines



Auto Pasting machine



Parts Assembly Lines



Router Cutting Machines



Cleaning Machines



Laser Cutting Machines



Auto Inspection/Electric Testing and Boxing



Cell Phone Speaker Inspection Machines



Tube Marking Machines



Autogas Charging Machines



Assembly System

CONTACT US



**TAN PHAT AUTOMATION JSC**

Tel: (+84)4 3685 7776 | Fax: (+84)4 3685 7775

Add: 168- Phan Trong Tue Road, Thanh Liet Ward, Thanh Tri Dist, Ha Noi, Viet Nam

[www.tpa.com.vn](http://www.tpa.com.vn)

